

© International Baccalaureate Organization 2022

All rights reserved. No part of this product may be reproduced in any form or by any electronic or mechanical means, including information storage and retrieval systems, without the prior written permission from the IB. Additionally, the license tied with this product prohibits use of any selected files or extracts from this product. Use by third parties, including but not limited to publishers, private teachers, tutoring or study services, preparatory schools, vendors operating curriculum mapping services or teacher resource digital platforms and app developers, whether fee-covered or not, is prohibited and is a criminal offense.

More information on how to request written permission in the form of a license can be obtained from <https://ibo.org/become-an-ib-school/ib-publishing/licensing/applying-for-a-license/>.

© Organisation du Baccalauréat International 2022

Tous droits réservés. Aucune partie de ce produit ne peut être reproduite sous quelque forme ni par quelque moyen que ce soit, électronique ou mécanique, y compris des systèmes de stockage et de récupération d'informations, sans l'autorisation écrite préalable de l'IB. De plus, la licence associée à ce produit interdit toute utilisation de tout fichier ou extrait sélectionné dans ce produit. L'utilisation par des tiers, y compris, sans toutefois s'y limiter, des éditeurs, des professeurs particuliers, des services de tutorat ou d'aide aux études, des établissements de préparation à l'enseignement supérieur, des fournisseurs de services de planification des programmes d'études, des gestionnaires de plateformes pédagogiques en ligne, et des développeurs d'applications, moyennant paiement ou non, est interdite et constitue une infraction pénale.

Pour plus d'informations sur la procédure à suivre pour obtenir une autorisation écrite sous la forme d'une licence, rendez-vous à l'adresse <https://ibo.org/become-an-ib-school/ib-publishing/licensing/applying-for-a-license/>.

© Organización del Bachillerato Internacional, 2022

Todos los derechos reservados. No se podrá reproducir ninguna parte de este producto de ninguna forma ni por ningún medio electrónico o mecánico, incluidos los sistemas de almacenamiento y recuperación de información, sin la previa autorización por escrito del IB. Además, la licencia vinculada a este producto prohíbe el uso de todo archivo o fragmento seleccionado de este producto. El uso por parte de terceros —lo que incluye, a título enunciativo, editoriales, profesores particulares, servicios de apoyo académico o ayuda para el estudio, colegios preparatorios, desarrolladores de aplicaciones y entidades que presten servicios de planificación curricular u ofrezcan recursos para docentes mediante plataformas digitales—, ya sea incluido en tasas o no, está prohibido y constituye un delito.

En este enlace encontrará más información sobre cómo solicitar una autorización por escrito en forma de licencia: <https://ibo.org/become-an-ib-school/ib-publishing/licensing/applying-for-a-license/>.

# Mathematics: analysis and approaches

## Higher level

### Paper 1

Friday 6 May 2022 (afternoon)

Candidate session number

2 hours

--	--	--	--	--	--	--	--	--	--

#### Instructions to candidates

- Write your session number in the boxes above.
- Do not open this examination paper until instructed to do so.
- You are not permitted access to any calculator for this paper.
- Section A: answer all questions. Answers must be written within the answer boxes provided.
- Section B: answer all questions in the answer booklet provided. Fill in your session number on the front of the answer booklet, and attach it to this examination paper and your cover sheet using the tag provided.
- Unless otherwise stated in the question, all numerical answers should be given exactly or correct to three significant figures.
- A clean copy of the **mathematics: analysis and approaches formula booklet** is required for this paper.
- The maximum mark for this examination paper is **[110 marks]**.







3. [Maximum mark: 8]

A function  $f$  is defined by  $f(x) = \frac{2x-1}{x+1}$ , where  $x \in \mathbb{R}$ ,  $x \neq -1$ .

(a) The graph of  $y = f(x)$  has a vertical asymptote and a horizontal asymptote.

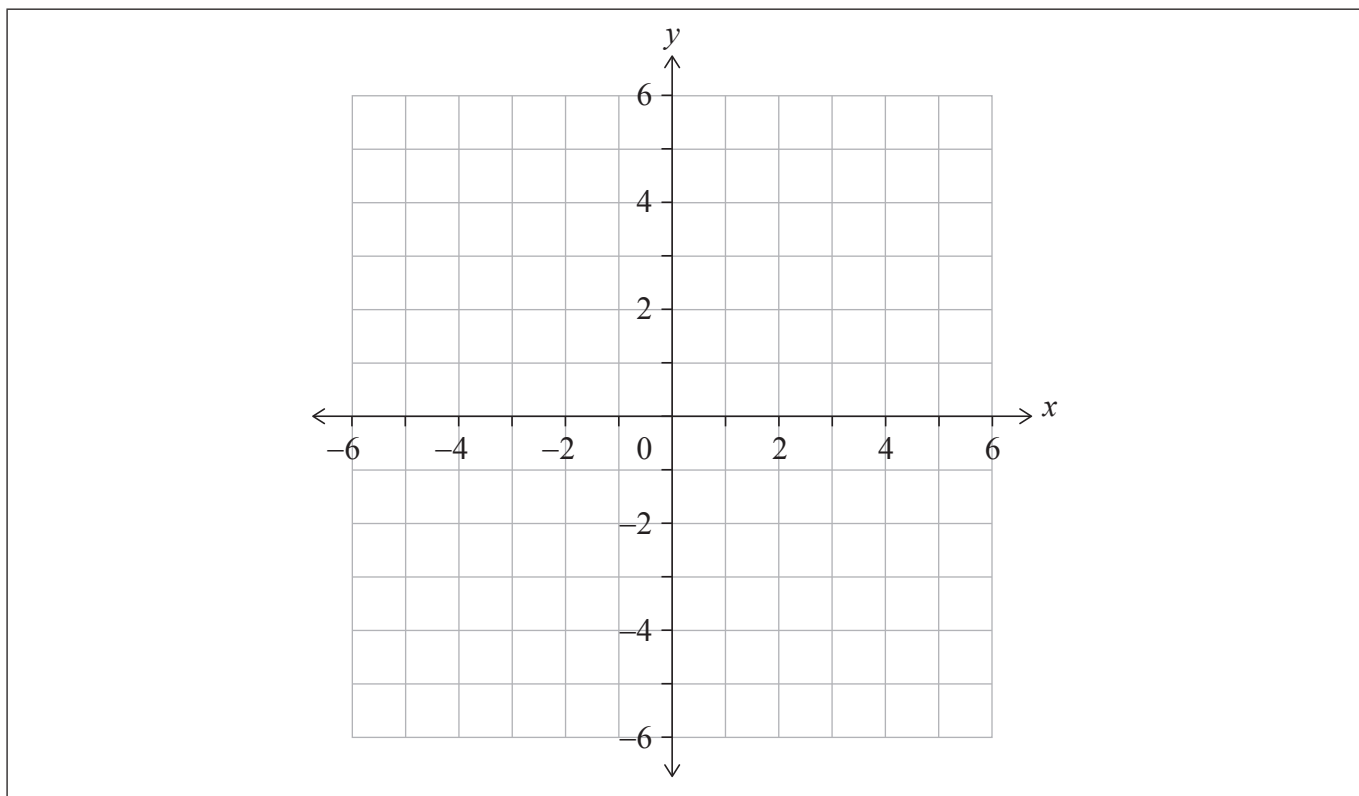
Write down the equation of

(i) the vertical asymptote;

(ii) the horizontal asymptote. [2]

(b) On the set of axes below, sketch the graph of  $y = f(x)$ .

On your sketch, clearly indicate the asymptotes and the position of any points of intersection with the axes. [3]



(c) Hence, solve the inequality  $0 < \frac{2x-1}{x+1} < 2$ . [1]

(d) Solve the inequality  $0 < \frac{2|x|-1}{|x|+1} < 2$ . [2]

(This question continues on the following page)



(Question 3 continued)

.....

.....

.....

.....

.....

.....

.....

.....

.....

.....

.....

.....

.....

.....



4. [Maximum mark: 5]

Find the least positive value of  $x$  for which  $\cos\left(\frac{x}{2} + \frac{\pi}{3}\right) = \frac{1}{\sqrt{2}}$ .

.....

.....

.....

.....

.....

.....

.....

.....

.....

.....

.....

.....

.....

.....

.....



5. [Maximum mark: 7]

Consider the binomial expansion  $(x + 1)^7 = x^7 + ax^6 + bx^5 + 35x^4 + \dots + 1$  where  $x \neq 0$  and  $a, b \in \mathbb{Z}^+$ .

(a) Show that  $b = 21$ . [2]

The third term in the expansion is the mean of the second term and the fourth term in the expansion.

(b) Find the possible values of  $x$ . [5]

.....

.....

.....

.....

.....

.....

.....

.....

.....

.....

.....

.....

.....

.....

.....

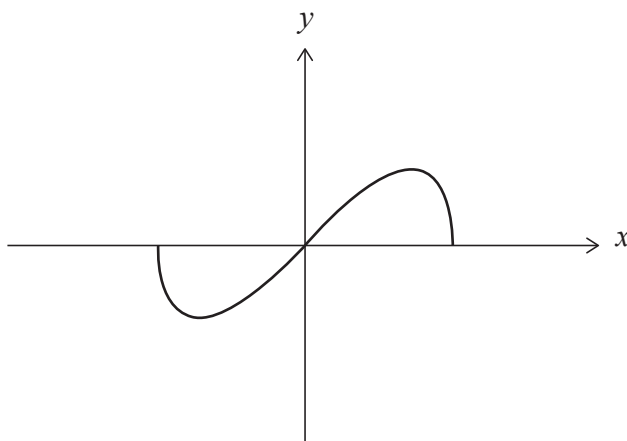




6. [Maximum mark: 8]

A function  $f$  is defined by  $f(x) = x\sqrt{1-x^2}$  where  $-1 \leq x \leq 1$ .

The graph of  $y = f(x)$  is shown below.



(a) Show that  $f$  is an odd function.

[2]

The range of  $f$  is  $a \leq y \leq b$ , where  $a, b \in \mathbb{R}$ .

(b) Find the value of  $a$  and the value of  $b$ .

[6]

.....

.....

.....

.....

.....

.....

.....

.....

.....

.....

.....

.....



7. [Maximum mark: 6]

By using the substitution  $u = \sec x$  or otherwise, find an expression for  $\int_0^{\frac{\pi}{3}} \sec^n x \tan x \, dx$  in terms of  $n$ , where  $n$  is a non-zero real number.

.....

.....

.....

.....

.....

.....

.....

.....

.....

.....

.....

.....

.....

.....

.....

.....

.....

.....

.....

.....

.....

.....

.....

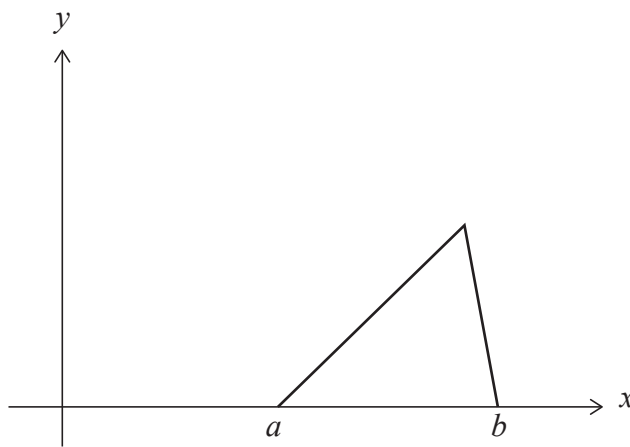


8. [Maximum mark: 6]

A continuous random variable  $X$  has the probability density function

$$f(x) = \begin{cases} \frac{2}{(b-a)(c-a)}(x-a), & a \leq x \leq c \\ \frac{2}{(b-a)(b-c)}(b-x), & c < x \leq b \\ 0, & \text{otherwise} \end{cases}$$

The following diagram shows the graph of  $y = f(x)$  for  $a \leq x \leq b$ .



Given that  $c \geq \frac{a+b}{2}$ , find an expression for the median of  $X$  in terms of  $a$ ,  $b$  and  $c$ .

.....

.....

.....

.....

.....

.....

.....

.....

.....

.....

.....

.....

.....

.....

.....

.....

.....

.....

.....

.....

.....

.....

.....



9. [Maximum mark: 5]

Prove by contradiction that the equation  $2x^3 + 6x + 1 = 0$  has no integer roots.

.....

.....

.....

.....

.....

.....

.....

.....

.....

.....

.....

.....

.....

.....

.....



Do **not** write solutions on this page.

### Section B

Answer **all** questions in the answer booklet provided. Please start each question on a new page.

10. [Maximum mark: 16]

A biased four-sided die with faces labelled 1, 2, 3 and 4 is rolled and the result recorded. Let  $X$  be the result obtained when the die is rolled. The probability distribution for  $X$  is given in the following table where  $p$  and  $q$  are constants.

$x$	1	2	3	4
$P(X = x)$	$p$	0.3	$q$	0.1

For this probability distribution, it is known that  $E(X) = 2$ .

- (a) Show that  $p = 0.4$  and  $q = 0.2$ . [5]
- (b) Find  $P(X > 2)$ . [2]

Nicky plays a game with this four-sided die. In this game she is allowed a maximum of five rolls. Her score is calculated by adding the results of each roll. Nicky wins the game if her score is at least ten.

After three rolls of the die, Nicky has a score of four.

- (c) Assuming that rolls of the die are independent, find the probability that Nicky wins the game. [5]

David has two pairs of unbiased four-sided dice, a yellow pair and a red pair. Both yellow dice have faces labelled 1, 2, 3 and 4. Let  $S$  represent the sum obtained by rolling the two yellow dice. The probability distribution for  $S$  is shown below.

$s$	2	3	4	5	6	7	8
$P(S = s)$	$\frac{1}{16}$	$\frac{2}{16}$	$\frac{3}{16}$	$\frac{4}{16}$	$\frac{3}{16}$	$\frac{2}{16}$	$\frac{1}{16}$

The first red die has faces labelled 1, 2, 2 and 3. The second red die has faces labelled 1,  $a$ ,  $a$  and  $b$ , where  $a < b$  and  $a, b \in \mathbb{Z}^+$ . The probability distribution for the sum obtained by rolling the red pair is the same as the distribution for the sum obtained by rolling the yellow pair.

- (d) Determine the value of  $b$ . [2]
- (e) Find the value of  $a$ , providing evidence for your answer. [2]



Do **not** write solutions on this page.

11. [Maximum mark: 20]

A function  $f$  is defined by  $f(x) = \frac{1}{x^2 - 2x - 3}$ , where  $x \in \mathbb{R}$ ,  $x \neq -1$ ,  $x \neq 3$ .

- (a) Sketch the curve  $y = f(x)$ , clearly indicating any asymptotes with their equations. State the coordinates of any local maximum or minimum points and any points of intersection with the coordinate axes. [6]

A function  $g$  is defined by  $g(x) = \frac{1}{x^2 - 2x - 3}$ , where  $x \in \mathbb{R}$ ,  $x > 3$ .

- (b) The inverse of  $g$  is  $g^{-1}$ .

(i) Show that  $g^{-1}(x) = 1 + \frac{\sqrt{4x^2 + x}}{x}$ .

- (ii) State the domain of  $g^{-1}$ . [7]

A function  $h$  is defined by  $h(x) = \arctan \frac{x}{2}$ , where  $x \in \mathbb{R}$ .

- (c) Given that  $(h \circ g)(a) = \frac{\pi}{4}$ , find the value of  $a$ .

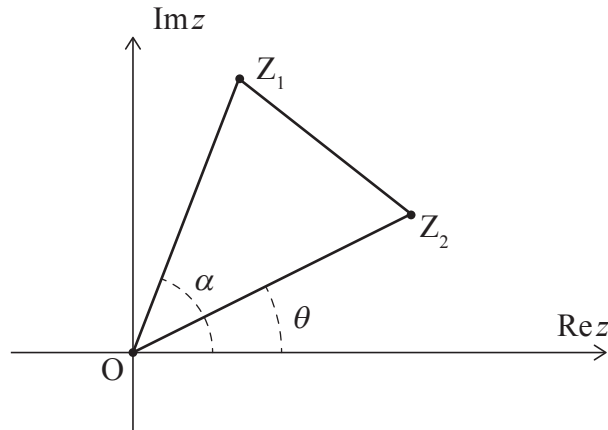
Give your answer in the form  $p + \frac{q}{2}\sqrt{r}$ , where  $p, q, r \in \mathbb{Z}^+$ . [7]



Do **not** write solutions on this page.

**12.** [Maximum mark: 18]

In the following Argand diagram, the points  $Z_1$ ,  $O$  and  $Z_2$  are the vertices of triangle  $Z_1OZ_2$  described anticlockwise.



The point  $Z_1$  represents the complex number  $z_1 = r_1 e^{i\alpha}$ , where  $r_1 > 0$ . The point  $Z_2$  represents the complex number  $z_2 = r_2 e^{i\theta}$ , where  $r_2 > 0$ .

Angles  $\alpha$ ,  $\theta$  are measured anticlockwise from the positive direction of the real axis such that  $0 \leq \alpha$ ,  $\theta < 2\pi$  and  $0 < \alpha - \theta < \pi$ .

(a) Show that  $z_1 z_2^* = r_1 r_2 e^{i(\alpha - \theta)}$  where  $z_2^*$  is the complex conjugate of  $z_2$ . [2]

(b) Given that  $\text{Re}(z_1 z_2^*) = 0$ , show that  $Z_1OZ_2$  is a right-angled triangle. [2]

In parts (c), (d) and (e), consider the case where  $Z_1OZ_2$  is an equilateral triangle.

(c) (i) Express  $z_1$  in terms of  $z_2$ .

(ii) Hence show that  $z_1^2 + z_2^2 = z_1 z_2$ . [6]

Let  $z_1$  and  $z_2$  be the distinct roots of the equation  $z^2 + az + b = 0$  where  $z \in \mathbb{C}$  and  $a, b \in \mathbb{R}$ .

(d) Use the result from part (c)(ii) to show that  $a^2 - 3b = 0$ . [5]

Consider the equation  $z^2 + az + 12 = 0$ , where  $z \in \mathbb{C}$  and  $a \in \mathbb{R}$ .

(e) Given that  $0 < \alpha - \theta < \pi$ , deduce that only one equilateral triangle  $Z_1OZ_2$  can be formed from the point  $O$  and the roots of this equation. [3]

**References:**



Please **do not** write on this page.

Answers written on this page  
will not be marked.



16EP15



Please **do not** write on this page.

Answers written on this page  
will not be marked.



16EP16